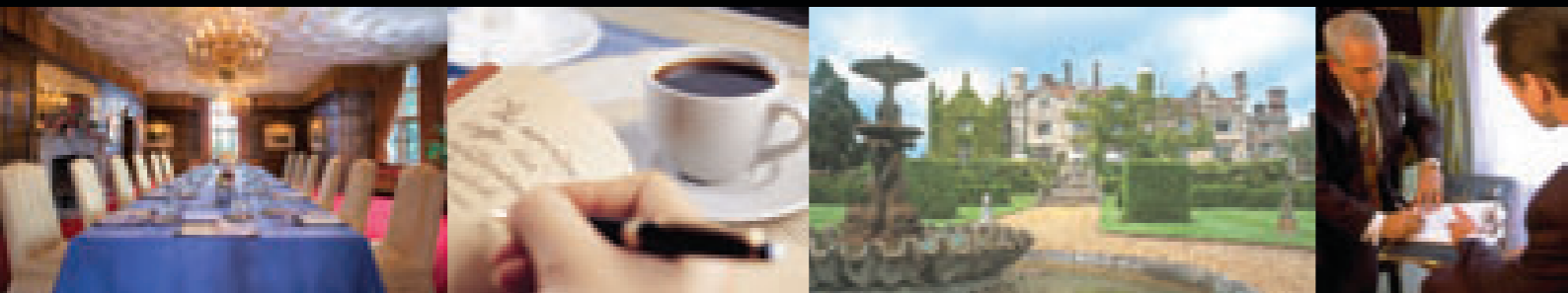


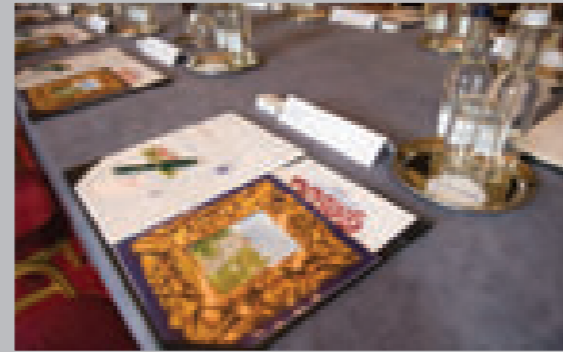
Eastwell Manor



Conference Brochure

Welcome to Eastwell Manor

Conference with Confidence



Eastwell Manor is set within an impressive 3000 acre estate in the heart of the Kent countryside, conveniently located on the outskirts of Ashford and just 37 minutes from London St. Pancras via the high speed train service.

The beautiful Manor building provides a magnificent backdrop to any conference. Quality without compromise and peaceful seclusion - that is the Eastwell Manor experience.

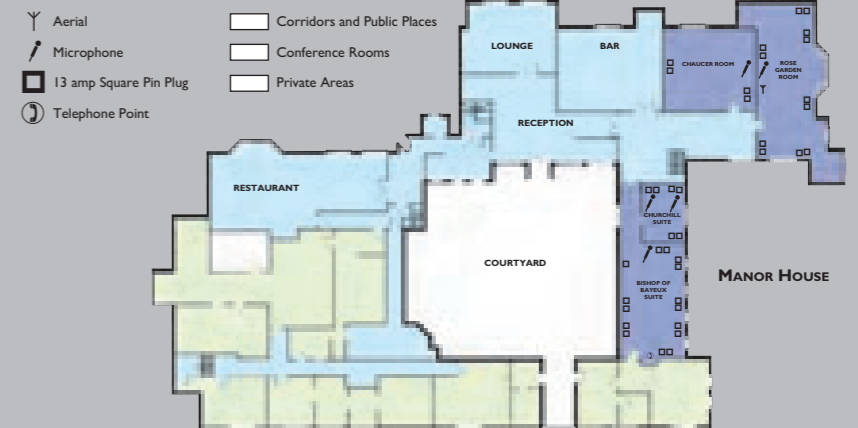
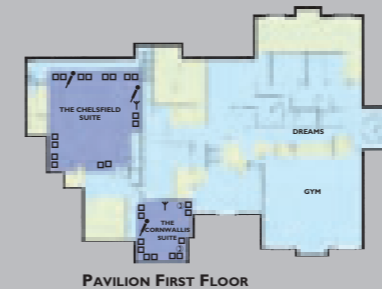
Step over the threshold and be welcomed by warming log fires, magnificent panelled rooms, luxurious bedrooms, acres of beautifully manicured lawns and gardens and some of the finest leisure and spa facilities in England.

Our team of dedicated professionals, luxury facilities and selection of both modern and period conference rooms and suites, combined with the tranquil and peaceful surroundings make Eastwell Manor the ideal venue for your next conference.

62 En Suite Bedrooms • 7 Conference Rooms • 'Dreams' Beauty Salon • Fine Dining • Banqueting • The Pavilion Leisure Spa • Indoor and Outdoor Swimming Pools • 'Eastwell 9' Golf Course • Tennis • Outdoor Activities

Room Capacities	THEATRE	CABARET	CLASSROOM	BOARDROOM	U SHAPE	RECEPTION	BANQUET
ROSE GARDEN ROOM - IN THE MANOR	100	50	40	40	30	120	80
CHAUCER ROOM - IN THE MANOR	35	20	-	25	20	100	30
BISHOP OF BAYEUX SUITE - IN THE MANOR	70	25	25	30	20	70	40
CHURCHILL SUITE - IN THE MANOR	-	-	-	12	-	12	12
CORNWALLIS SUITE - IN THE PAVILION	-	-	-	14	-	-	-
KESTON SUITE - IN THE PAVILION	80	30	25	30	30	100	60
CHELSEFIELD SUITE - IN THE PAVILION	180	60	70	60	40	150	120

FREE WI-FI AVAILABLE IN ALL CONFERENCE ROOMS



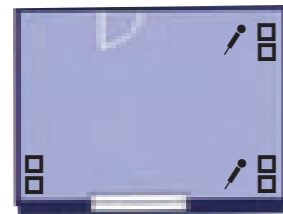
Our conference rooms offer delegates a number of flexible meeting configurations, with four elegant rooms located in the Manor and three modern air-conditioned rooms in The Pavilion, including the popular purpose built executive boardroom.

Conference Rooms in the Manor

3

Churchill Suite

GROUND FLOOR NATURAL LIGHT

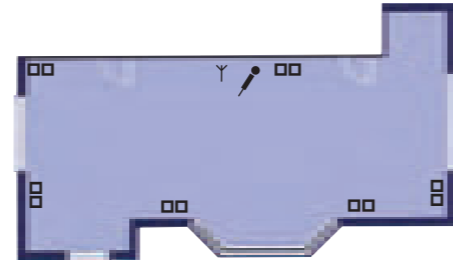


Dimensions

LENGTH 5.9 M
WIDTH 4 M
HEIGHT 3.5 M
AREA 23.6 SQM

Rose Garden Room

GROUND FLOOR NATURAL LIGHT OAK PANELLING



Dimensions

LENGTH 16.5 M HEIGHT 3.5 M
WIDTH 5.5 M AREA 90.75 SQM

Bishop of Bayeux Suite

GROUND FLOOR NATURAL LIGHT OAK PANELLING

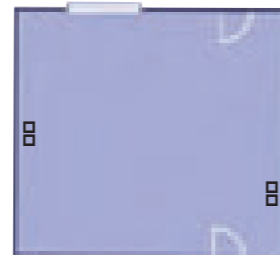


Dimensions

LENGTH 10.97 M
WIDTH 5.08 M
HEIGHT 3.4 M
AREA 55.72 SQM

Chaucer Room

GROUND FLOOR NATURAL LIGHT OAK PANELLING



Dimensions

LENGTH 7.5 M
WIDTH 9 M
HEIGHT 3.5 M
AREA 67.5 SQM

INTERCONNECTING DOORS TO THE ROSE GARDEN ROOM IF REQUIRED AND WITH DIRECT ACCESS TO THE TERRACE AND GARDENS

Conference Rooms in The Pavilion

4

Keston Suite

GROUND FLOOR NATURAL LIGHT AIR-CONDITIONED
DANCE FLOOR



PRIVATE BAR AVAILABLE IF REQUIRED WITH PRIVATE STAIRCASE TO THE CHELSFIELD SUITE

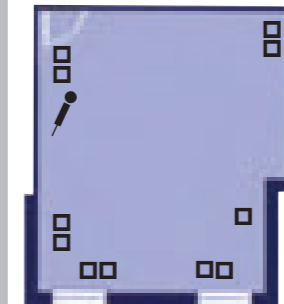
Dimensions

LENGTH 11.5 M HEIGHT 2.4 M
WIDTH 8.41 M AREA 96.71 SQM

Cornwallis Suite

FIRST FLOOR NATURAL LIGHT AIR-CONDITIONED

DEDICATED BOARDROOM



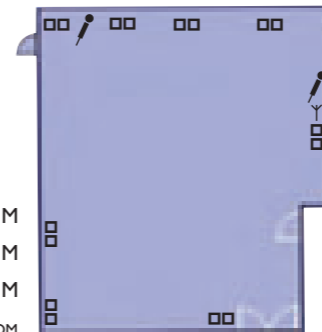
Dimensions

LENGTH 7.8 M
WIDTH 6.95 M
HEIGHT 2.4 M
AREA 54.21 SQM

Chelsfield Suite

FIRST FLOOR AIR-CONDITIONED

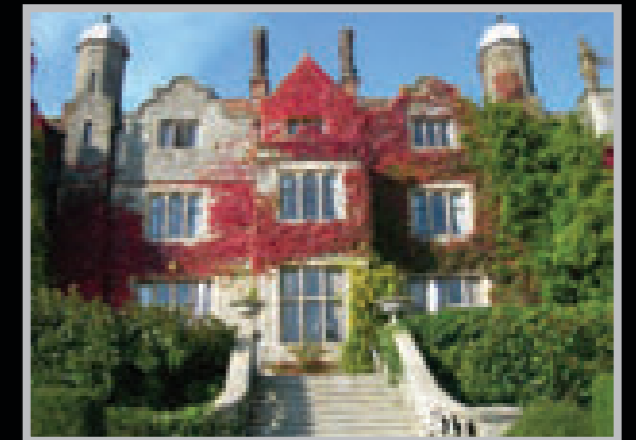
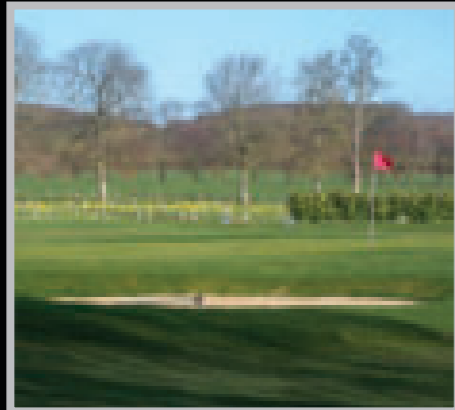
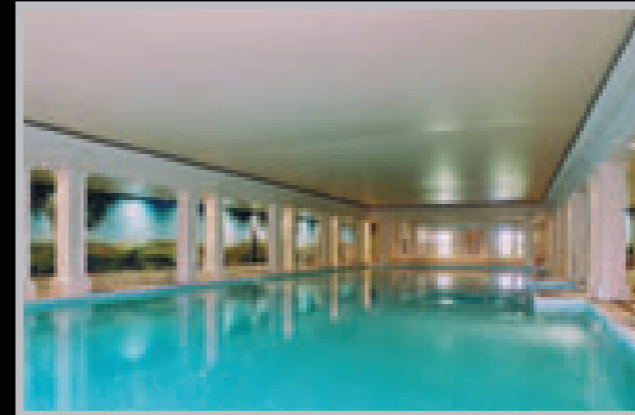
WITH PRIVATE STAIRCASE TO THE KESTON SUITE



Dimensions

LENGTH 12.95 M
WIDTH 10.1 M
HEIGHT 2.4 M
AREA 130.79 SQM

Eastwell Manor is a secure and secluded country house hotel providing the ideal venue to relax and discuss business matters with colleagues and clients alike. However formal or informal your meeting or conference, our experienced team of conference organisers will help you to plan your day, taking you through our range of conference rooms, bedrooms and suites to suit your requirements. Treat your colleagues and guests to a very special working atmosphere in a fabulous setting.



5

6

Dining at Eastwell Manor

The Manor Restaurant

Our award winning Manor Restaurant offers guests a fine dining experience, with an extensive range of inventive and creative French and modern English cuisine.

Formal but intimate, this is the setting within the grand wood panelled dining room where you dine in the company of our resident pianist.

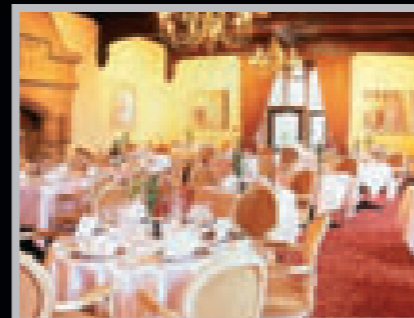
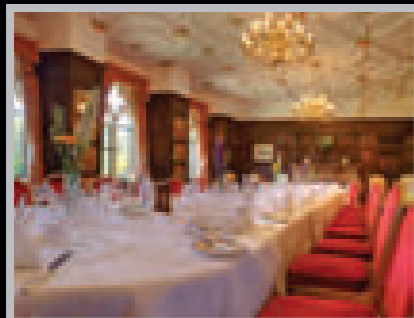
Hythe Bay at The Pavilion

The Hythe Bay Seafood Restaurant at The Pavilion brings Seafood to Ashford. You can enjoy an all day menu in the sophisticated, informal and modern Pavilion Restaurant, with the emphasis on quality. A fabulous choice of first-class fish dishes is available daily, as well as meat and vegetarian options.

For more relaxed moments you can take morning coffee or afternoon tea on the terrace and unwind and absorb the views towards the North Downs.

Private Dining

For that unique occasion enjoy an exclusive dining experience in one of our private dining suites. We would be delighted to construct a menu to suit your requirements and are able to cater for groups of 8 to 80 people in picturesque surroundings.



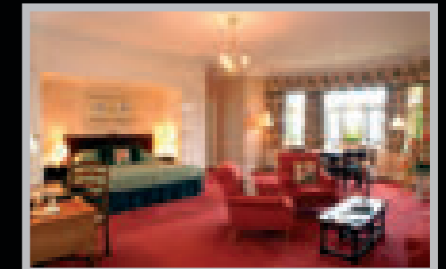
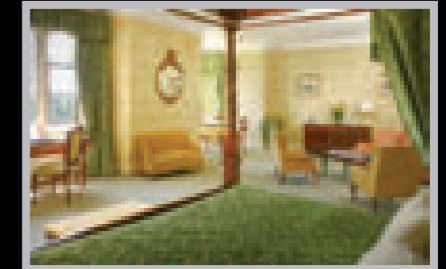
Accommodation

Manor Bedrooms

With its origins dating back to the Norman Conquest, the Manor has many interesting period features including carved panelled rooms and massive baronial stone fireplaces. The Manor features 23 tastefully decorated and furnished en-suite rooms and suites, offering space, elegance and sumptuous comfort. Each room is individually designed and furnished in a classical style yet has all the modern day facilities that you would expect from a first class family run country house hotel.

All Manor bedrooms will shortly have flat screen colour TVs with a selection of freeview channels, DVD/CD players, safe, trouser press, tea making facilities, en suite bathroom many with separate showers, hairdryer, telephone and 24 hour room service.

A selection of rooms and suites have four poster beds; some have separate lounges and private dining facilities.

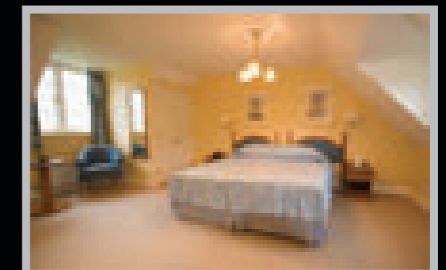


Mews Cottages

Guests can enjoy the flexibility of Eastwell Mews cottages situated in the grounds of the Manor, sympathetically converted from original Victorian stables. These courtyard apartments comprise a total of 39 bedrooms, all offering the very highest quality accommodation.

Some have private terraces with uninterrupted views over the North Downs, with one, two or three bedrooms all en-suite, excellent kitchen, sitting room and dining facilities. They provide spacious and extensive accommodation and the advantage of self-catering if you so choose. Perfect for seclusion; providing accommodation for family, friends and conference delegates at any time.

All bedrooms have a flat screen colour TV with a selection of freeview channels, safe, trouser press, tea making facilities, en suite bathroom many with separate showers, hairdryer, telephone and 24 hour room service. All have access to a lounge with a flat screen colour TV showing a selection of freeview channels, DVD player, free wi-fi and a kitchen suitable for preparing light meals along with appropriate dining facilities.

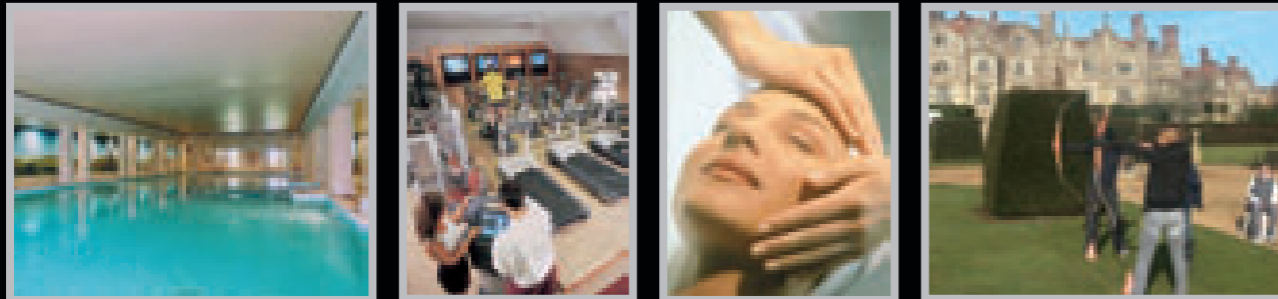


Spa and Leisure Facilities

As a hotel resident of Eastwell Manor you will have the opportunity to enjoy the excellent leisure facilities of The Pavilion where you can relax and unwind. The Pavilion Leisure Spa is one of the finest luxury leisure and spa experiences in England and embodies the very best in health, beauty and fitness in keeping with the unique quality of Eastwell Manor.

Our features include an impressive 20 metre heated swimming pool, set between pillars against a background of hand painted murals creating the luxury of an aquamarine haven within a Roman palace overlooking an exotic vista towards the Mediterranean. In addition there is a hydro-therapy pool, steam room, sauna, Jacuzzi, gymnasium and beauty salon. The heated outdoor swimming pool, all weather tennis court and petanque pitches are also located within the extensive grounds.

'Dreams', is our award winning beauty salon, which has fifteen treatment rooms available to our guests and clients. Here our trained team of therapists and beauticians will undertake numerous and varied treatments using therapies to relax, rejuvenate and refresh with products from Aromatherapy Associates, Clarins, Guinot, Jessica and St Tropez. This provides an ideal opportunity for conference delegates to de-stress and unwind before and after an important meeting. Corporate groups with special rates can be arranged. To book individual treatments or Spa packages telephone 'Dreams' on 01233 213111 or email: dreamssalon@eastwellmanor.co.uk



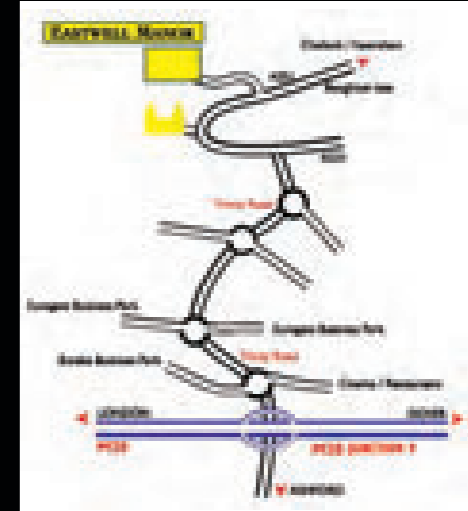
Our fully air-conditioned gymnasium, an area of over 3000 square feet, contains the very latest 'state-of-the-art' 'Technogym' equipment.

Keen golfers will be delighted at being able to play the Eastwell 9, a 2132 yard USPGA standard par 32 course that has been created primarily for use by our hotel residents and conference guests.

Team Building activities are also available. Please speak to one of our conference organisers for more details.

- QUAD BIKES • ARGO CATS • ARCHERY • CROSSBOWS • BIRDS OF PREY DEMONSTRATIONS •
- LASER CLAY SHOOTING • AIR PISTOLS/AIR RIFLES • 4 X 4 OFF ROAD DRIVING EXPERIENCE •
- HOT AIR BALLOONING • HELICOPTER TRIPS • BEAUTY AND MAKE UP DEMONSTRATIONS •
- GOLF TOURNAMENTS • TENNIS • PETANQUE PITCHES • CROQUET LAWN

How to find us



By Rail

Only 37 minutes from London St Pancras

With two trains running every hour from 5am until 11pm every day, with the last fast train leaving London for Ashford at 00.12am (23.42pm Sundays), the high speed service makes Eastwell Manor convenient and accessible. The Hotel is a 10 minute drive from Ashford International station and courtesy transport can be arranged.

The M20 from London

Take the M20 towards Folkestone (Channel Tunnel). Leave at junction 9 (signposted Ashford/Canterbury). At the bottom of the slip road on the roundabout, take the first left into Trinity Road (A251). Follow this road for 1.5 miles crossing four roundabouts. At the end of the road you will find traffic lights and a T junction. Turn left, continuing on the A251 (signposted Faversham). As you turn you will see the historic tower gates to the Eastwell Manor estate on your left and the beginning of the long red brick wall that surrounds it. Continue on this road for about 1 mile. At the signpost for Boughton Aluph, slow down as the hotel entrance is just a little further on the left. Follow the driveway for 0.5 miles up to the main entrance to Eastwell Manor.

FROM CANTERBURY AND THE A252

Take the A28 from Canterbury signposted to Ashford. Continue along this road until you come to a fork. Keep to the right in the direction of Chilham. When you pass Chilham the road will become the A252. Continue until you reach a roundabout and turn left (signposted Ashford/Wye A251). Stay on this road and you will pass woodland and you will then see a long red brick wall on your right. This wall surrounds the Eastwell estate. As you drive through the village of Boughton Aluph you will see the entrance to the hotel on the right. Follow the drive for 0.5 miles and follow the signs for the main entrance to Eastwell Manor.

Approximate Driving Times

Canterbury	20 mins
Central London	1 hr 30 mins
Dover	30 mins

Public Transport

Ashford International	10 mins
London Charing Cross	1 hr 15 mins
St Pancras High Speed	37 mins

Airport

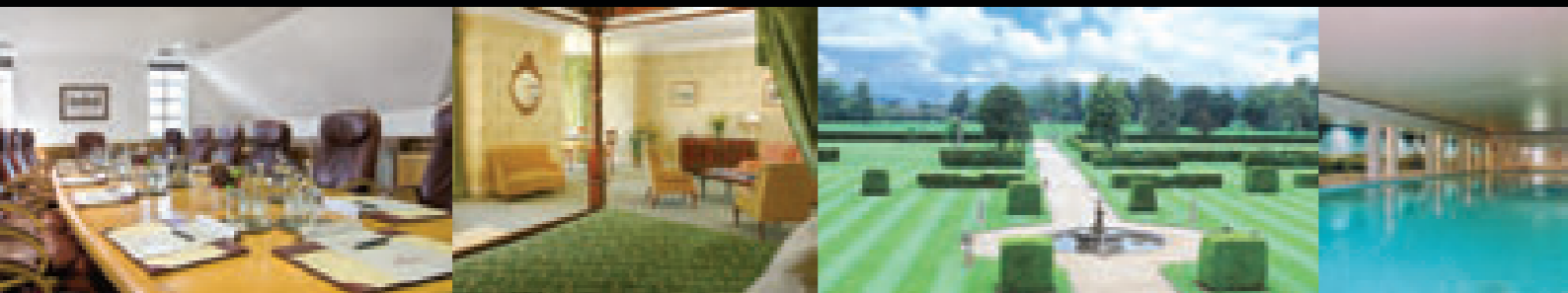
London Gatwick	55 mins
----------------	---------

Helicopter Landing Pad at Hotel

Grid reference:

OS map 189, 51 deg.11 N 0015.5 E

Eastwell Manor



Eastwell Park, Boughton Lees, Ashford, Kent TN25 4HR Telephone: +44 (0)1233 213000 Fax: +44 (0)1233 635530
Email: enquiries@eastwellmanor.co.uk Website: www.eastwellmanor.co.uk